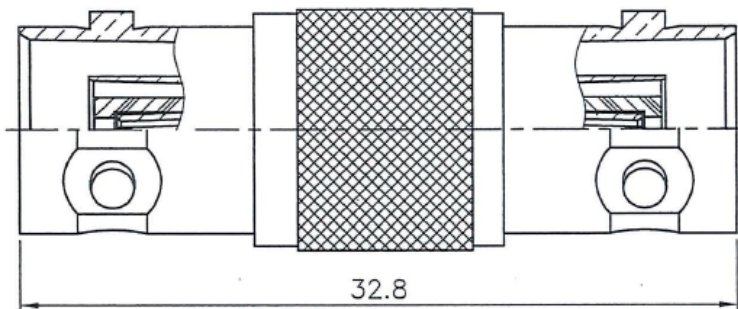
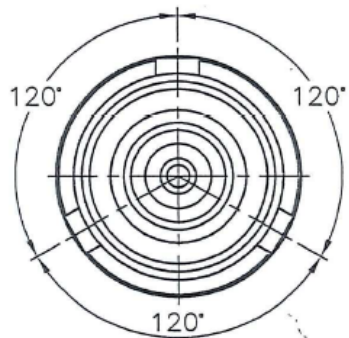


Electrical

Item	Test Condition (at 25°C±5°C)	Specification
Impedance	DC-500 MHz	Non-Constant
Dielectric Withstanding Voltage (Between Center Cond. & Inter Cond.)	AC, time: 60sec	1200 Vrms Min.
Dielectric Withstanding Voltage (Between Inter Cond. & Outer Cond.)	AC, time: 60sec	500 Vrms Min.
Insulation Resistance	DC 500V, time: 120sec	5000 MΩ Min.

Mechanical

Item	Test Condition	Specification
Force to Engage/ Disengage	N/A	2.5 in-lbs. Max. / 8 lbs. Max.
Coupling Nut Retention	60mm/min	100 lbs Min.
Contact Retention	60mm/min	6 lbs. Min.



NO.	DESCRIPTION	MATERIAL	FINISH
1	BODY	BRASS	NICKEL PL OVER COPPER PL
2	INSULATOR	PTFE	WHITE
3	INSULATOR	PTFE	WHITE
4	LOCK RING	BRASS	GOLD PL OVER NICKEL PL COPPER
5	CONTACT BODY	BRASS	GOLD PL OVER NICKEL PL COPPER
6	INSULATOR	PTFE	WHITE
7	INSULATOR	PTFE	WHITE
8	CONTACT PIN	BERYLLIUM COPPER	GOLD PL OVER NICKEL PL COPPER

RoHS Compliant		Cd ≤75ppm
REMARKS	BRASS: Cd ≤75ppm PHOSPHOR BRONZE: Pb <4wt%	

SCALE NONE		PART NUMBER TRB-A-JJ
UNIT mm		
DATE 2025/11/10	PROJECTION 	TO-CONNE CO.,LTD