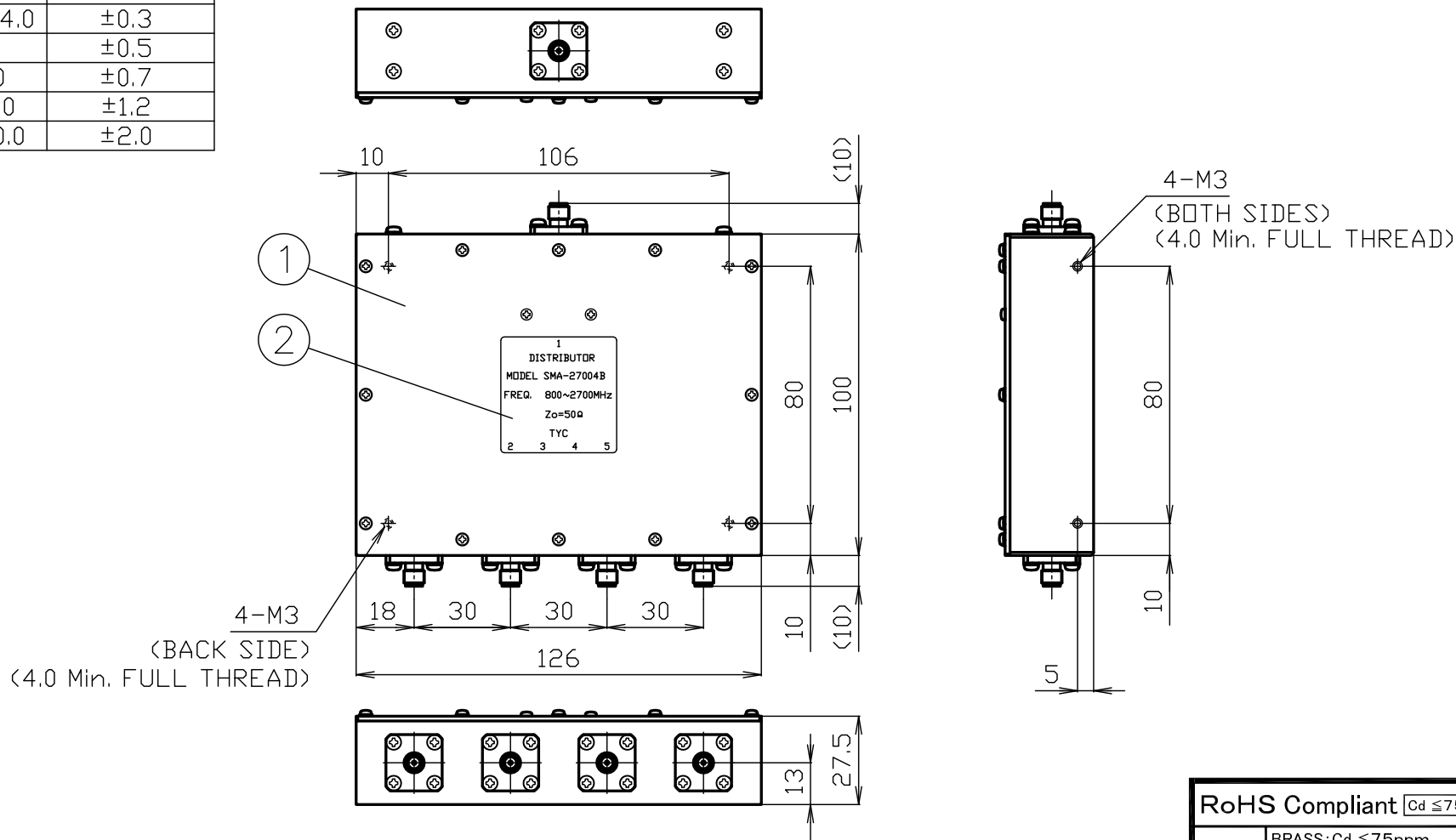


DIMENSIONAL TOLERANCE TABLE *2	
DIVISION	TOLERANCE
Less than 4.0	±0.3
4.0~16.0	±0.5
16.0~63.0	±0.7
63.0~250.0	±1.2
250.0~1000.0	±2.0



\*1 : COVER PART MATERIAL : BRASS/FINISH : Ni

RoHS Compliant [Cd ≤75ppm]	
REMARKS	BRASS: Cd ≤75ppm PHOSPHOR BRONZE: Pb <4wt%

NO.	DESCRIPTION	MATERIAL	Q'TY	FINISH	REMARK	DATE	PROJECTION	DRAWN	INSPECTED	APPROVED	CHECKED	PART NUMBER
7								上	山	檜	三	SMA-27004B
6								'26,05,14	'26,05,14	'26,05,14	'26,05,14	
5								領	本	澤	村	
4												
3												
2	LABEL	-----	1	--								
1	SMA-J TYPE COAXIAL 4 DISTRIBUTOR	*1	1	--	BODY/Ni. CENTER PIN/Au(SMA CONNECTOR)	2026.05.14	TO-CONN					DRAWING NO. V-1196949

■ Part number : SMA-27004B

■ Drawing number : V-1196949

■ Nominal

Standard : IEC 60169-15

Power handing : 250mW

Rated frequency : 800MHz~2700MHz

Impedance : 50Ω (Unbalance)

Operating temperature range : -10°C~+45°C

Operating humidity range : 90%(Max.) ※No condensation

■ Structural shape : Conformity with the drawings.

■ Electrical

Test Items	Test Method/Value	Remarks
Insertion loss	800MHz~2700MHz : 8.0dB(Max.)	Including distribution loss
VSWR	800MHz~2700MHz : 1.3(Max.)	
Isolation	800MHz~2700MHz : 20dB(Min.)	
Amplitude characteristics	800MHz~2700MHz : 1.5dBp-p(Max.)	

■ Mechanical

Test Items	Test Method/Value	Remarks
Compatibility	No defects or abnormalities	Connecting with a standard compliant connector

■ Revisions

No.	Date	Contents
1		
2		

Date	Name
2026/5/15	上領(Prepared)
2026/5/15	山本(Inspected)
2026/5/15	檜澤(Approved)
2026/5/15	三村(Checked)