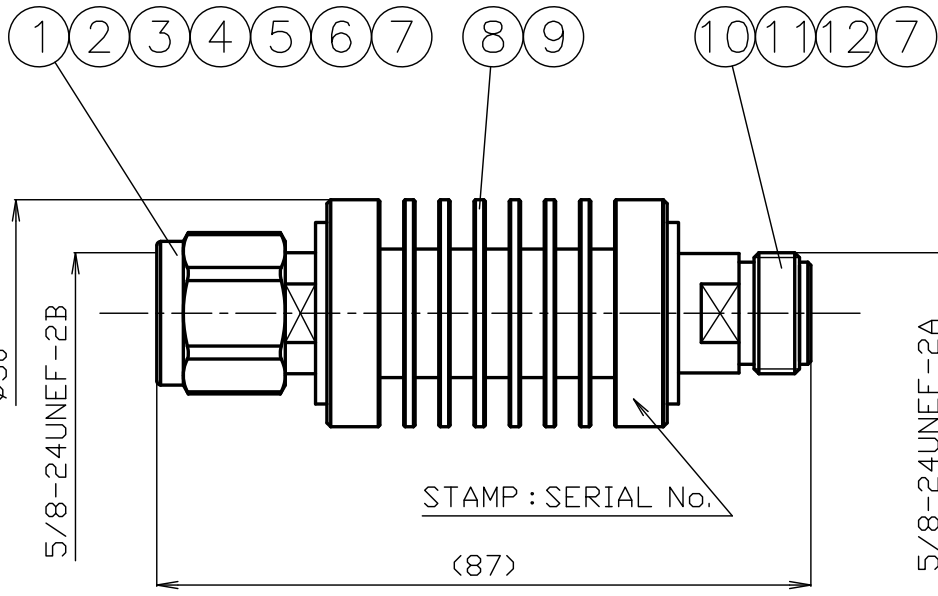
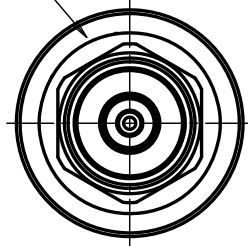
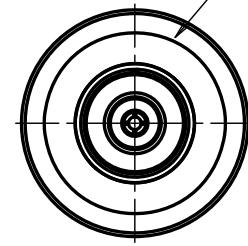


STAMP : 10W TYC 30dB IN



STAMP : OUT



- *1 : TERNARY PLATING
- *2 : ANODIZING<BLACK>
- *3 : STAINLESS STEEL
- *4 : PHOSPHOR BRONZE

NO.	DESCRIPTION	MATERIAL	Q'TY	FINISH	REMARK
12	INSULATOR B	PTFE	1	--	
11	CENTER PIN B	*4	1	Au	
10	BODY B	BRASS	1	*1	
9	ATTENUATION TERMINAL	--	1	--	
8	HEAT SINK	ALUMINUM	1	*2	
7	O-RING	SILICONE	2	--	
6	INSULATOR A	PTFE	1	--	
5	CENTER PIN A	*4	1	Au	
4	GASKET	SILICONE	1	--	
3	BODY A	BRASS	1	*1	
2	HOLDING RING	*3	1	--	
1	COUPLING NUT	BRASS	1	*1	

RoHS Compliant

SCALE	DRAWN	INSPECTED	APPROVED	CHECKED	PART NUMBER
1/1	井	檜	山	三	
UNIT	'23,12,18	'23,12,18	'23,12,18	'23,12,18	
mm	出	澤	本	村	
DATE	PROJECTION	株式会社 トーコン TO-CONN CO., LTD.			DRAWING NO.
2023.12.18					W-0595949

PRODUCT SPECIFICATIONS

Part No. NPJ50AT6G10W-30dB

No. 0592350

DWG No. W-0595949

Nominal 1 Standard JIS C 5411
 2 Power handling 10W
 3 Frequency range 6GHz
 4 Impedance 50Ω
 5 [OPR]Temp-Range -45°C~+85°C



		Test Items	Procedures/Test method	Requirements
DESIGN	1	Design & construction	Specified on relevant product drawing	No defects or abnormalities
	2	Materials	(DWG No. W-0595949)	
	3	Finishes		
ELECTRICAL	4	Attenuation	DC~6GHz	30±1.4dB
	5	V. S. W. R	DC~3GHz 3~6GHz	1.2 (Max.) 1.3 (Max.)
	6	Compatibility	Connecting with a standard-compliant connector	No defects or abnormalities
MECHANICAL	7	Tensile strength of coupling mechanism	At axial tensile force 300N	No defects or abnormalities
	8	Connection nut tightening torque	0.9~1.7N·m	No defects or abnormalities
	9	Waterproof	IPX7	No water ingress inside the connector
ENVIRONMENTAL				

	Remarks	Date
1		
2		
3		

Checked	Approved	Inspected	Prepared
三 21.11.22 村	山 21.11.22 本	檜 21.11.22 澤	渡邊 21.11.22 直弘