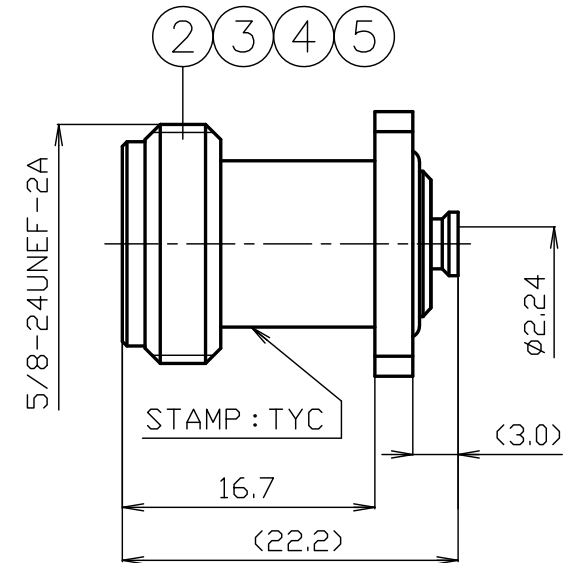
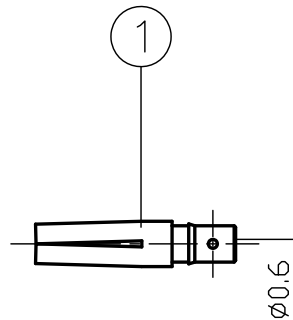


MOUNTING HOLE

*1: PHOSPHOR BRONZE



RoHS Compliant $Cd \leq 75ppm$

REMARKS BRASS: $Cd \leq 75ppm$
PHOSPHOR BRONZE: $Pb < 4wt\%$

7						SCALE	2/1	DRAWN	CHECKED	APPROVED	CONFIRMATION	PART NUMBER
6								渡邊	檜	山	三	N-PJ-085
5	BODY B	BRASS	1	Au				'23,10,05	'23,10,05	'23,10,05	'23,10,05	
4	O-RING	SILICONE	1	--				直弘	澤	本	村	
3	INSULATOR	PTFE	1	--		UNIT	mm					
2	BODY A	BRASS	1	Ni								
1	CENTER PIN	*1	1	Au		DATE	2023.10.05	PROJECTION		株式会社 トーコン		
NO.	DESCRIPTION	MATERIAL	Q'TY	FINISH	REMARK					TO-CONNE CO.,LTD.		DRAWING NO. J-0523105

PRODUCT SPECIFICATION

Part number: N-PJ-085

No. 0521386

Drawing number: J-0523105

Nominal 1 Standard JIS C 5411
 2 Voltage rating AC 500V
 3 Frequency range 10GHz
 4 Impedance 50Ω
 5 Operating Temperature Range -40°C~+85°C
 6 Operating Humidity Range 95%RH(Max.)
 ※No condensation



株式会社 トーコネ
 TO-CONNE CO., LTD.

	Test Items	Test Method/Value	Remarks
1	EL ECT R I C A L	Insulation Resistance	1000MΩ(Min.) at DC 500V
2		Withstand voltage	1 minute at AC 1000V
3		Contact resistance	3mΩ (max.)
4		V.S.W.R	DC~3GHz : 1.2(Max.)
5	M E C H A N I C A L	Compatibility	No defects or abnormalities
6		Cable tensile strength	98N(Min.)
7		Mounting strength	500N
8		Center contact captivation	0.98N(Min.)
9	O T H E R S	Cable group	0.085Semi-Rigid, 0.085Semi-Flex,RG-405/U

※The structural shape is shown in the attached drawing (Drawing number:J-0523105)

	REVISIONS	DATE
1		
2		
3		

Checked	Approved	Proof mark	Prepared
三 23.10.05 村	山 23.10.05 本	檜 23.10.05 澤	渡邊 23.10.05 直弘

GKQM-7

N-PJ-085 Cable Assembly Instructions

Cable group 0.085Semi-Rigid, RG-405/U, 0.085Semi-Flex

All parts of the connector as shown

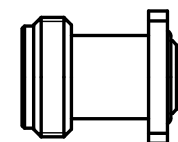
DRAWING NO. J-0523105



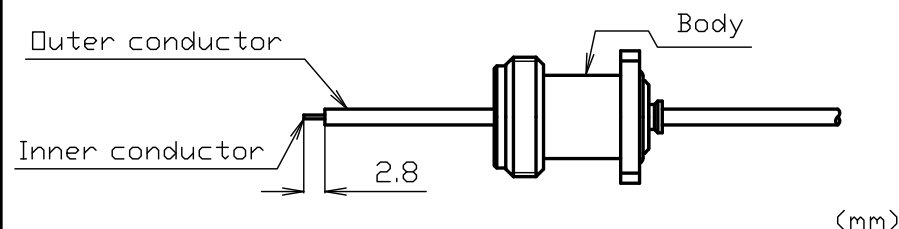
DRAWN	CHECKED	APPROVED	CONFIRMATION
渡邊 '23,10,05 直弘	檜 '23,10,05 澤	山 '23,10,05 本	三 '23,10,05 村



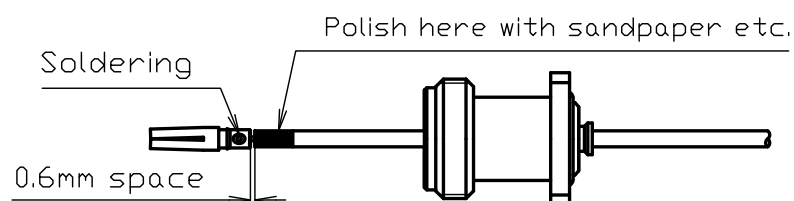
CENTER PIN



BODY

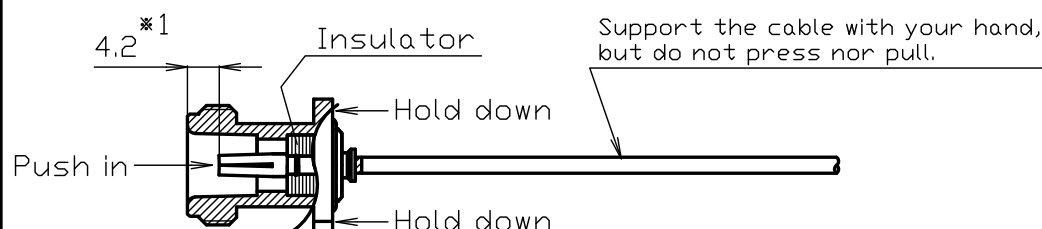


- Slide body onto cable as shown. Cut outer conductor and insulator to dimensions as shown.

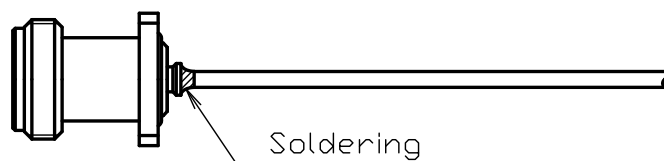


- Solder center pin on inner conductor of the cable.

ATTENTION Dimension should be as shown in diagram. After soldering, slightly pull center pin and make sure it is securely attached. For semi-rigid cable, polish area shown in diagram with sandpaper will make it easier to solder between cable and body.



- Hold firmly from panel side of body. Install cable assembly into body forward until cable dielectric seats against connector insulator. Make sure that the depth of the center pin from the mating part side is the dimension shown in diagram.*1



- Finally, solder body and cable to complete the work.

ATTENTION Solder should be applied evenly. To secure the cable and solder it quickly so that thermal stress does not push the internal insulation out or push the cable back in.