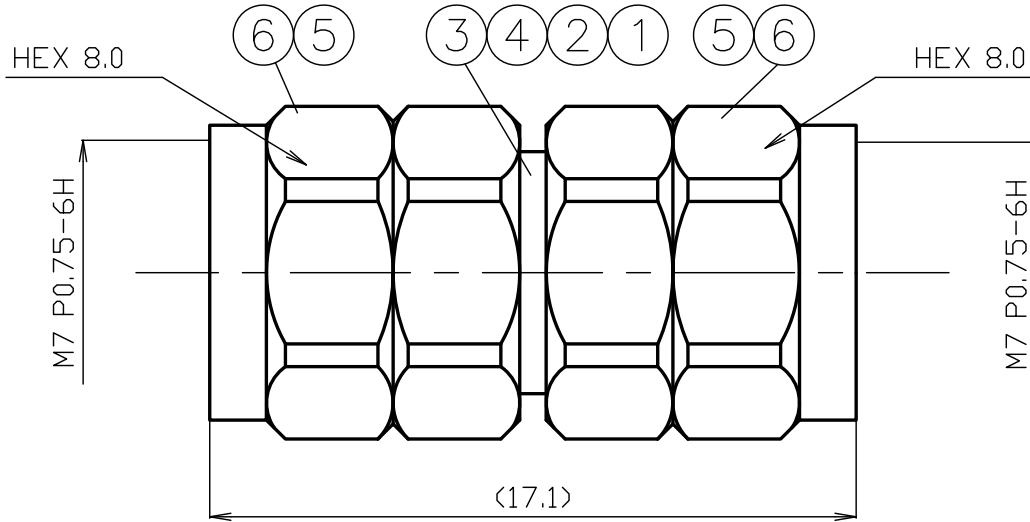
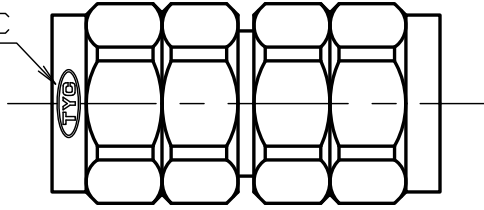
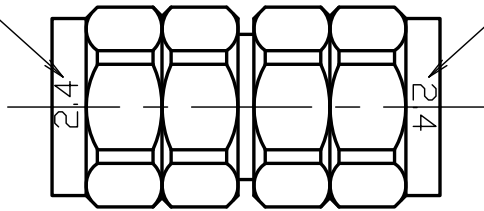


STAMP : TYC



STAMP : 2.4



STAMP : 2.4

- * 1 PASSIVATE
- * 2 STAINLESS STEEL
- * 3 BERYLLIUM COPPER

RoHS Compliant

NO.	DESCRIPTION	MATERIAL	Q'TY	FINISH	REMARK	SCALE	DRAWN	INSPECTED	APPROVED	CHECKED	PART NUMBER
7						5/1	上	檜	山	三	2.4-A-PP
6	COUPLING NUT	*2	2	*1		'24.04.01	'24.04.01	'24.04.01	'24.04.01		
5	HOLDING RING	*3	2	Ni		領	澤	本	村		
4	BODY B	*2	1	*1		UNIT					
3	BODY A	*2	1	*1		mm					
2	INSULATOR	PEI	1	--		DATE					
1	CENTER PIN	*3	1	Au		2023.11.29	PROJECTION				
							①	②	株式会社 トーコンネ TO-CONNEX CO., LTD.		DRAWING NO. W-1046483

PRODUCT SPECIFICATION

Part number: 2.4-A-PP

No. 1042636

Drawing number: W-1046483

Nominal 1 Standard	IEC 61169-40
2 Voltage rating	AC 160V
3 Frequency range	50GHz
4 Impedance	50Ω
5 Operating Temperature Range	-40°C~+85°C
6 Operating Humidity Range	95%RH(Max.) ※No condensation



		Test Items	Test Method/Value	Remarks
1	E L E C T R I C A L	Insulation Resistance	1000MΩ(Min.) at DC 500V	
2		Withstand voltage	1 minute at AC 500V	
3		Contact resistance	Inner conductor : 4mΩ(Max.) Outer conductor : 2.5mΩ(Max.)	
4		V.S.W.R	DC~50GHz : 1.25(Max.)	
5	M E C H A N I C A L	Compatibility	No defects or abnormalities	Mating with connector complying with the standard
6		Tensile strength of coupling mechanism	450N	At axial tensile force
7		Coupling torque	0.8~1.1N·m	

※The structural shape is shown in the attached drawing (Drawing number:W-1046483)

	REVISIONS	DATE
1		
2		
3		

Checked	Approved	Inspected	Preparation
 三 村 23.11.30	 山 本 23.11.30	 三 澤 23.11.30	 渡 邊 23.11.30 直 弘

GKQM-24